

Test 2

You have 10 minutes to complete this test.

You have 10 questions to complete within the given time.



Circle the letter next to the correct answer.

- ① Wendy wrote down the number that is 10000 greater than 300198.

What number did Wendy write down?

A	B	C	D	E
311110	400198	310198	301198	300189

- ② The table below shows the dates and times when Tower Bridge was lifted and the name of the vessel that passed through each time.

Sat	10 Jun	20:15	Silver Cloud
Sat	10 Jun	21:15	Motor Vessel Balmoral
Sun	11 Jun	14:45	Silver Cloud
Sun	11 Jun	15:15	Silver Wind
Sun	11 Jun	15:45	Motor Vessel Balmoral
Sun	11 Jun	16:30	Yacht Alexandria

Abigail was at Tower Bridge between 3 pm and 5 pm on Sunday 11th June. How many bridge lifts did she witness?

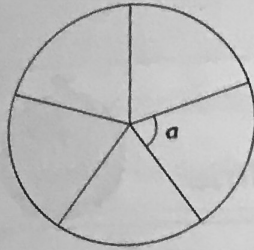
A	B	C	D	E
4	1	0	3	6

- ③ Brian attends drama classes 4 days per week between 6.30 pm and 7.15 pm. For how many hours does he attend drama classes per week?

A	B	C	D	E
3 hours	18 hours	2 hours	4 hours	1 hour

Questions continue on next page

- 4 The circle below has been divided into 5 equal segments.



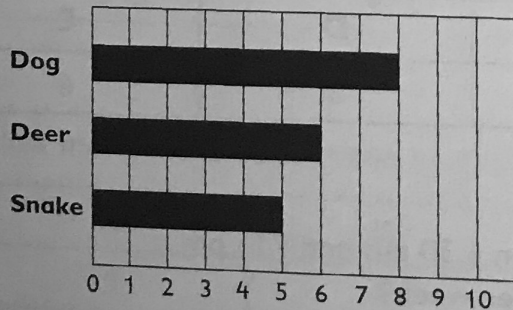
Which of the following has the same measure as Angle a ?

A	One angle in an equilateral triangle
B	One angle in a square
C	The third angle in a triangle where the other two angles are 63° and 59°
D	The third angle in a triangle where the other two angles are 60° and 48°
E	None of the above

- 5 Danny buys a newspaper for £1.10 and a chocolate bar for £0.65. He pays with a single coin. Which of the following could be the change that he receives?

A	Five 2 pence coins
B	Four 2 pence coins, one 5 pence coin and seven 1 pence coins
C	Four 5 pence coins, two 2 pence coins and one 1 pence coin
D	Twenty 1 pence coins
E	Four 5 pence coins

- 6 The chart below shows the number of each animal that is saved by a rescue centre in one week.



If the rescue centre saved the same number of animals each week, how many animals would be rescued in total in a fortnight?

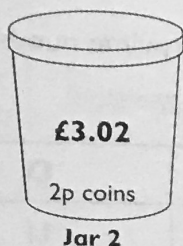
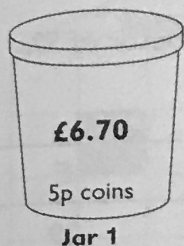
A	B	C	D	E
19	38	41	14	22

- 7 A ticket for a music recital costs £12.50 for an adult and £5.50 for a child. Mr Hardy buys tickets for himself, his wife and three children.

How much change does he receive if he pays with a £50 note?

A	B	C	D	E
£9.50	£8.50	£11.50	£13	£6

- 8 2 jars containing coins are shown below. Jar 1 contains only 5 pence coins with a total of £6.70. Jar 2 contains only 2 pence coins with a total of £3.02.



How many more coins are there in Jar 2 than in Jar 1?

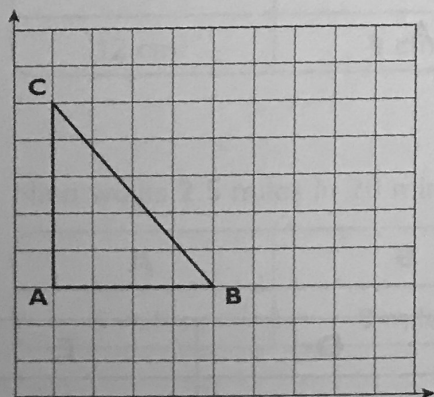
A	B	C	D	E
10 coins	13 coins	40 coins	12 coins	17 coins

- 9 In which of the following is the number 2 in the tenths column?

A	B	C	D	E
81.29	42.98	23.12	13.012	2.06

- 10 The graph below shows a triangle drawn on a centimetre grid. The triangle is then enlarged by a scale factor of 3.

What is the enlarged length of AB?



A	B	C	D	E
8 cm	15 cm	4 cm	24 cm	12 cm

Score: / 10